

MATRIX

Doing It Right!



MATRIX Does It All

The MATRIX family of automated tool dispensers powered by our unique management software can help you:

-  Drive down costs
-  Guarantee production output
-  Optimize stock levels
-  Streamline purchasing
-  Control cost per unit (CPU)
-  Select the right tools for each job



MATRIX

Doing It Right!

MATRIX Cabinet Options



MAXI

MAXI stands tall with a large capacity, surprisingly small footprint and a sleek, ergonomic design. Secure with electronically locked drawers & bins.



MINI

MINI can go just about anywhere, sitting atop a workbench, lockable MATRIX trolley or DLS 4D. Secure with electronically locked drawers & bins.



WIZ

Modular locker system. Perfect for large tooling and MRO. Multiple door/locker options.



DLS 8D/4D

Economical solution with flexible drawer partitions suitable for small and large items. Semi-secure with 8 or 4 electronically locked drawers.



ToolPort 8D/4D

Dispenses single inserts and small items. 100% Control. 100% Accountability. 8 drawer and 4 drawer models.

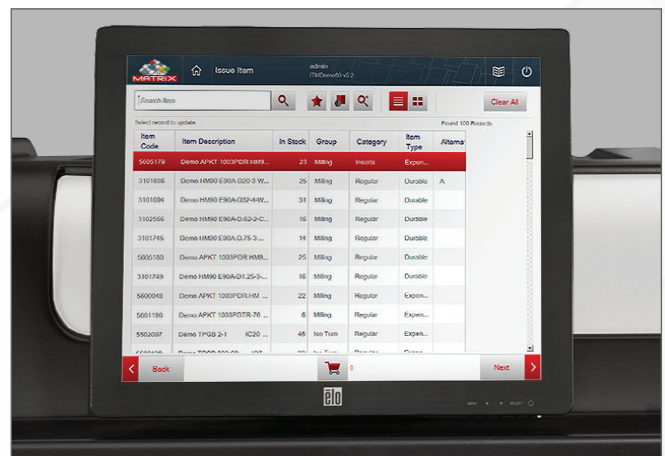
Where Innovation Never Stops!



MATRIX Touch Software

Easy to use touch screen application to issue and return items:

- Drives MAXI, MINI, DLS and specified Kardex shuttle models
- Searches items by group, text, numeric, application, picture and favorites
- Controls access to tools by user group, job, part and budget
- Prompts for alternative or related items
- Connects to electronic catalogs and tool selection apps
- Shopping basket for speedy issue of multiple items
- Alerts for stock shortages or discrepancies
- One database for multiple sites and cabinets



MATRIX

Doing It Right!

MATRIX Manage Software

Comprehensive PC application to manage your entire stock of tools, gauges & MRO, whether in a MATRIX cabinet or regular warehouse:

- Full item & supplier maintenance including prices, stock levels, locations, technical data and usage history
- Complete suite of standard and advanced reports
 - View and save in Excel, HTML, PDF and other formats
 - Smartphone format
 - Automatic delivery by email
- Sophisticated planning engine ensures maximum availability with minimum stock
- Analyzer dashboard and item analytics provide overview of key performance indicators (KPIs)
- CPU and tool life calculator
- Tracks serial items and gauge calibration
- Interfaces with SAP and machining cloud
- Export/Import interface with ERP systems
- Automatic calculation of re-order points and purchasing
- Build kits to issue groups of items
- Multi-language user interface
- Link photos and documents to items
- Manage the rework process
- Dedicated mobile app
- Tool allocation for job planning
- Smart reports for customized data



Where Innovation Never Stops!



MAXI and MINI – Completely Modular

- 16 bin sizes
- Over 50 drawer options with multiple bin configurations
- Maximum bins per drawer – 198 MAXI and 96 MINI
- Auto-Lock mechanism locks bins when the drawer is returned (optional)
- Available in 2 versions: TOUCH (stand-alone) and POD (add-on)
- TOUCH - supplied with PC, touchscreen (17" MAXI & 15" MINI), UPS (surge protection and power backup), barcode reader, network switch and management software
- Manual override in case of power failure
- RFID, fingerprint and magnetic card readers are available
- Network - all versions can connect directly to the LAN. POD can also connect to a TOUCH.
- Electrical supply - 110AC +/-10% 4.6A or 220AC +/-10% 2.2A.
- Cabinet and drawer frames supplied in top-quality industrial grade zinc coated steel
- Hood and side panels supplied in ABS and bins supplied in PC-ABS
- All metal, plastic and electronic parts are made from recyclable material
- External colors: black (RAL9005) and silver (RAL9116)
- Manufactured under QMS ISO9001-2008
- CE & UL/CA certified

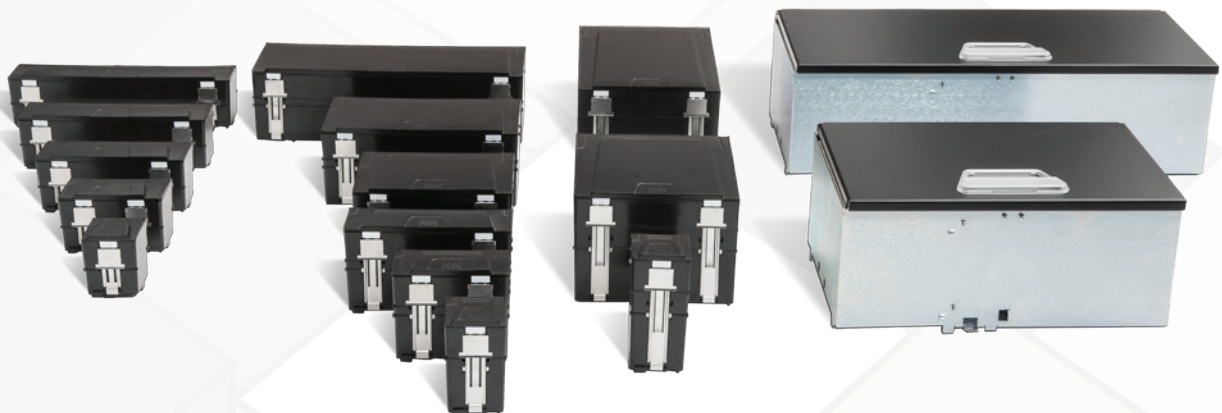


MATRIX

Doing It Right!

MAXI and MINI Bin Options

Code	H mm	D mm	W mm	H "	D "	W "
50A	50	39	42	1.9	1.5	1.6
50B	50	39	92	1.9	1.5	3.6
50C	50	39	142	1.9	1.5	5.5
50D	50	39	192	1.9	1.5	7.5
50E	50	39	242	1.9	1.5	9.5
75A	75	39	42	2.9	1.5	1.6
75B	75	39	92	2.9	1.5	3.6
75C	75	39	142	2.9	1.5	5.5
75G	75	89	142	2.9	3.5	5.5
75H	75	89	192	2.9	3.5	7.5
75L	75	89	292	2.9	3.5	11.5
100A	100	39	42	3.9	1.5	1.6
100J	100	139	142	3.9	5.4	5.5
100K	100	189	142	3.9	7.4	5.5
125XL	125	165	295	4.9	6.5	11.6
125XXL	125	165	445	4.9	6.5	17.5



Where Innovation Never Stops!



Specifications

MAXI

- Drawers per cabinet: 1-12 [depends on drawer heights and quantity of Auto-Locks]
- Drawer heights (net): 50mm/2", 75mm/2.9", 100mm/3.9" and 125mm/4.9"
- Load weight per drawer: up to 50kg/110lb (90kg/190lb for jumbo drawer)
- Cabinet weight varies depending on number of drawers and auto-locks: MAXI with 4 drawers and 4 auto-locks is ~400kg/880lb; MAXI with 12 drawers is ~600kg/1325lb
- Cabinet frame includes 4 adjustable legs and removable front panel for forklift access
- Cabinet dimensions 1180mm/47" (W) x 752mm/30" (D) x 1469mm/58" (H)



DLS 8D

- Sturdy industrial cabinet with 8 electronically locked drawers
- 2 versions: TOUCH (stand-alone) and POD (add-on)
- Manual override in case of power failure
- TOUCH – supplied with all-in-one pc-touchscreen, bar code reader, network switch and management software
- Direct network connection and single power supply 110-230V
- Load weight per drawer: up to 180kg/397lb
- 8 drawers per cabinet (H): 3 x 101mm/4"; 4 x 127mm/5"; 1 x 203mm/8"
[Net drawer height is 26mm/1" less than above nominal values]
- Cabinet dimensions 915mm/36" (W) x 610mm/24" (D) x 1220mm/48" (H)
- Front access forklift base - 100mm/4" (H)



MATRIX

Doing It Right!

MINI

- Drawers per cabinet: 1-5 [depends on drawer heights and quantity of auto-locks]
- Drawer heights (net): 50mm/2", 75mm/2.9" and 100mm/3.9"
- Load weight per drawer: up to 20kg/44lb
- Cabinet weight varies depending on number of drawers and auto-locks: MINI with 4 drawers is ~165kg/365lb
- Cabinet dimensions 860mm/34" (W) x 581mm/23" (D) x 800mm/32" (H)



DLS 4D

- Sturdy industrial cabinet with 4 electronically locked drawers
- POD version only
- Manual override in case of power failure
- Direct network connection and single power supply 110-230V
- Load weight per drawer: up to 180kg/397lb
- 4 drawers per cabinet (H): 1 x 101mm/4"; 2 x 153mm/6"; 1 x 203mm/8" [Net drawer height is 26mm/1" less than above nominal values]
- Cabinet dimensions: 915mm/36" (W) x 610mm/24" (D) x 820mm/32" (H)
- Front access forklift base: 50mm/2" (H)



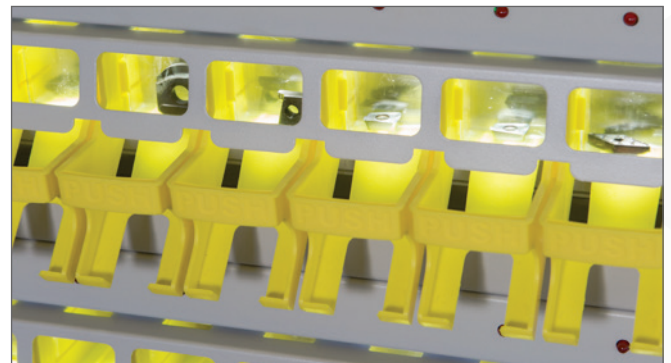
Where Innovation Never Stops!



Specifications

ToolPort 8D/4D

- Large capacity / Small footprint → 800 inserts (4D bench-top model) or 1600 inserts (8D free standing model)
- TOUCH supplied with PC, touchscreen, single power supply 110-230V, barcode reader and network switch
- Single or double size reusable containers store each insert
- 10 cartridges per drawer
- 1 SKU per cartridge
- Each cartridge is locked and pre-loaded with 10 single containers
- Containers per cartridge – maximum 20 single or 10 double
- Controlled by MATRIX software
- 8D model dimensions: 677mm/27" (W) x 614mm/24" (D) x 1448mm/57" (H)
- 4D model dimensions: 677mm/27" (W) x 614mm/24" (D) x 876mm/35" (H)
- Front access forklift base: 100mm/4" (H)
- CE certified



MATRIX

MATRIX WIZ

- Reconfigurable
- Sleek modern design, transparent doors and LED lighting
- “DIY” installation
- WIZ cabinet comprises:
 - Hood
 - Top and bottom frames
 - Base with forklift access
- 4-12 doors (lockers) per 2 column frame
- 6-18 doors (lockers) per 3 column frame
- Master cabinet houses 1 or 2 controllers – each controller can actuate 32 doors
- Up to 2 slave cabinets can be connected to a master cabinet
- Load weight per shelf – 15kg/33lbs
- Available as a POD (add-on) version
- Manual override in case of power failure
- Direct network connection
- Single power supply 12V 15A per cabinet
- Cabinet color - black (RAL9005)
- Cabinet dimensions – 2070mm/81.5” (H) x 914mm/36” (W) x 457mm/18” (D)
- 6 door options / locker dimensions:



	Door Code	H mm	W mm	D mm	H "	W "	D "
2 Column Frame	2C-S	157	457	457	6	18	18
	2C-D	305	457	457	12	18	18
	2C-T	457	457	457	18	18	18
3 Column Frame	3C-S	157	305	457	6	12	18
	3C-D	305	305	457	12	12	18
	3C-T	457	305	457	18	12	18



Where Innovation Never Stops!





MATRIX ANDROID

Tool Crib Management from the Palm of your Hand!

- MATRIX app manages traditional warehouse and tool room
- Records transactions via Wi-Fi connection to networked MATRIX data base
- Compatible with any Android device, preferably with a built-in 1D/2D scanner
- Requires MATRIX software license v6.5 or higher

MATRIX POUCH

Always the Right Tools for the Job!

- MATRIX Pouch reads Balluff chip on tool adaptor
- Data string with tool assembly parts is transmitted to MATRIX
- Quick “error proof” access to approved tools
- Compatible with common adaptor types and sizes
- Requires MATRIX software license v6.5 or higher

MATRIX RTLS

100% Visibility Anywhere on the Shop Floor

- MATRIX Real Time Location System tracks production assets that move around on the shop floor
- Reduced time locating production assets
- Increased utilization of production assets
- Easy to implement
- IoT Hardware includes:
 - BLE (Bluetooth low energy) Beacon - attached to each tracked asset - transmits a signal with a unique ID
 - Gateway - installed at each location, like machine tool or tool crib - receives the beacon’s signal and transmits location data to MATRIX
- Track → Gauges; Measuring Devices; Test Equipment, Production Fixtures etc.
- Requires MATRIX software license v6.5 or higher



A.C.T. EQUIPMENT SALES LTD. www.actequipment.com

Burnaby Branch
4455 Alaska Street
Burnaby, BC V5C 5T3
Tel: (604) 294-6271
Fax: (604) 294-8131
1(800) 667-1504
burnaby@actequipment.com

Edmonton Branch
6786-75th St. N.W.
Edmonton, AB T6E 6T9
Tel: (780) 462-1777
Fax: (780) 461-5605
1(800) 661-5979
edmonton@actequipment.com

Calgary Branch
Bay 10, 7003-30th St. S.E.
Calgary, AB T2C 1N6
Tel: (403) 279-6016
Fax: (403) 279-5390
1(800) 685-8155
calgary@actequipment.com

Saskatoon Branch
Unit 112 - 4002 Arthur Rose Ave.
Saskatoon, SK S7P 0C9
Tel: (306) 244-4810
Fax: (306) 244-4811
1(866) 234-0120
saskatoon@actequipment.com

Winnipeg Branch
Unit 4 - 2065 Logan Ave.
Winnipeg, MB R2R 0J1
Tel: (204) 783-3210
Fax: (204) 783-3224
1(877) 783-3201
winnipeg@actequipment.com

